

# PRODUCT INFORMATION

LET YOU HAVE A CLEARER UNDERSTANDING OF THE PRODUCT INFORMATION

## INTRODUCTION

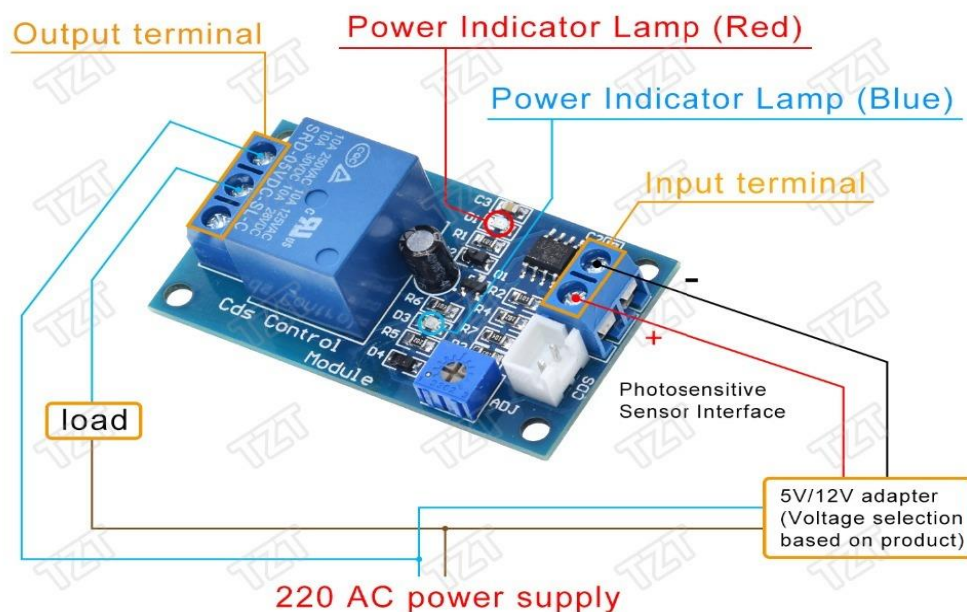
- This module can be used for light detection, brightness detection, with power indicator (red) and relay suction indicator (blue), and with four M3 screw mounting holes, which greatly facilitates installation. The board can adjust the sensitivity of light through potentiometer, with its own relay, and can be used for various brightness detection control switches, such as street lights, which can be automatically turned on at night. Auto-extinguishing during the day, and other devices that need to be automated

## PARAMETER

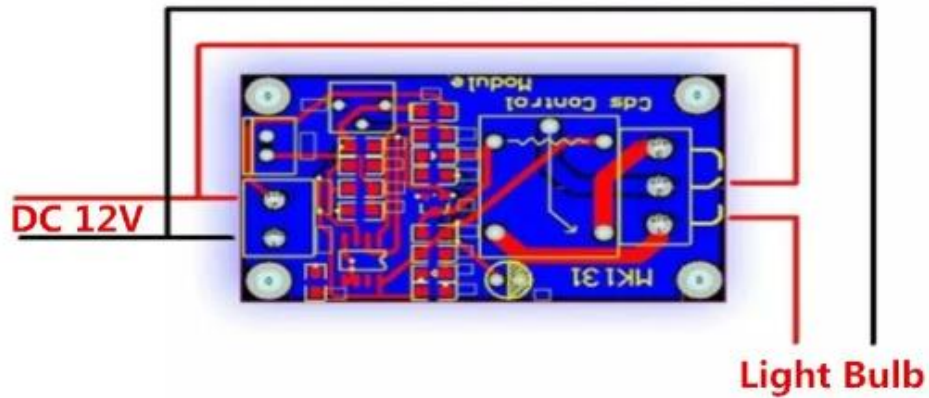
Module name	Photosensitive relay module
Module model	XH-M131
Input voltage	DC 5/12V
Output type	Output switch
Control capacity	10A(MAX)
Control frequency	1MHz
Module size	53*21*19mm

## OPERATIONAL INSTRUCTIONS

- Connect the input terminal to 12V DC (pay attention to the positive and negative poles do not connect the opposite), then the red light of the power indicator will light up.
- Connect the output control terminal to the power supply with maximum voltage 250V and current 10A, and connect the load.
- When the photosensitive probe detects the dimming of light, the switch closes automatically, the load works, and the blue light of the working indicator lights up; when the light turns on, the relay disconnects, the load stops working, and the working indicator lights go out with the light.
- If the light detection is not sensitive enough, the screwdriver can adjust the potentiometer by itself to achieve the sensitivity of light detection.



## Control 12V Connection Mode:



## Control 220V connection Mode:

