



Fast Recovery Diodes

RF1501TF3S

[Product description]

ROHM's fast recovery diodes are ultra high-speed, low VF, and suited for significant efficiency increase of switching power supply as well as reduction of switching loss.

Features

EHigh-reliability TO-220 package product.

Product specifications

Absolute maximum ratings (Ta=25°C)

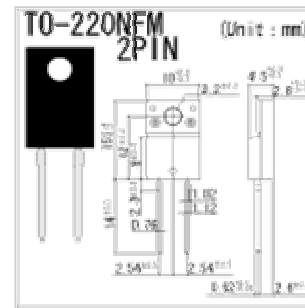
| Rated parameters | Standard value | Conditions |
|---|----------------|------------|
| Repetitive peak reverse voltage $V_{RM}(V)$ | 350 | |
| Reverse voltage(DC) $V_R(V)$ | 300 | |
| Forward current I_F | - | |
| Average rectified forward current $I_O(A)$ | 20 | |
| Forward current surge peak $I_{FSM}(A)$ | 100 | 60Hz/1cyc |
| Junction temperature $T_J(^{\circ}C)$ | 150 | |
| Storage temperature $T_{stg}(^{\circ}C)$ | -55 to +150 | |

Outline

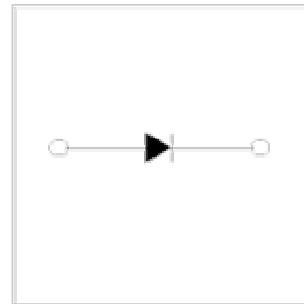


15x10(t=4.5)

Dimensions



Equivalent circuit diagram



*The contents described here are just outline for introduction.

Please obtain the specification sheets from us for thorough check before use.