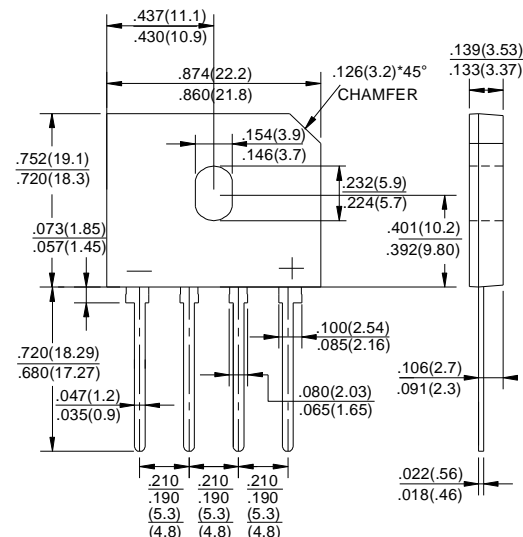


## GLASS PASSIVATED BRIDGE RECTIFIERS

## Features

- ◆ Surge overload rating -135 amperes peak
- ◆ Ideal for printed circuit board
- ◆ Reliable low cost construction utilizing molded plastic technique
- ◆ Plastic material has U/L flammability classification 94V-0



Dimensions in inches and (millimeters)

## Mechanical Data

**Case :** JEDEC GBU Molded plastic body

**Terminals** : Solder plated, solderable per MIL-STD-750, Method 2026

**Polarity** : Polarity symbol marking on body

**Mounting Position:** Any

## Maximum Ratings And Electrical Characteristics

Ratings at 25°C ambient temperature unless otherwise specified.

Single phase half-wave 60Hz, resistive or inductive load, for capacitive load current derate by 20%.

Parameter	SYMBOLS	GBU 15005	GBU 1501	GBU 1502	GBU 1504	GBU 1506	GBU 1508	GBU 1510	UNITS
Marking Code		MDD GBU 15005	MDD GBU 1501	MDD GBU 1502	MDD GBU 1504	MDD GBU 1506	MDD GBU 1508	MDD GBU 1510	
Maximum repetitive peak reverse voltage		V <sub>RRM</sub>	50	100	200	400	600	800	
Maximum RMS voltage	V <sub>RMS</sub>	35	70	140	280	420	560	700	V
Maximum DC blocking voltage	V <sub>DC</sub>	50	100	200	400	600	800	1000	V
Maximum average forward(with heatsink NOTE 2) Rectified current @T <sub>c</sub> =100°C(without heatsink)	I <sub>(AV)</sub>	15.0 3.2							A
Peak forward surge current 8.3ms single half sine-wave superimposed on rated load (JEDEC Method)	I <sub>FSM</sub>	240.0							A
Rating for Fusing(t<8.3ms)	I <sup>2</sup> t	239							A <sup>2</sup> s
Maximum forward voltage at 7.5A DC	V <sub>F</sub>	1.0							V
Maximum DC reverse current T <sub>A</sub> =25°C at rated DC blocking voltage T <sub>A</sub> =125°C	I <sub>R</sub>	10 500							μ A μ A
Typical Junction Capacitance (Note 1)	C <sub>J</sub>	70							pF
Typical Thermal Resistance (Note 2)	R θ JA	2.2							°C/W
Operating junction temperature range	T <sub>J</sub>	-55 to +150							° C
storage temperature range	T <sub>STG</sub>	-55 to +150							° C

NOTES: 1.Measured at 1.0MHz and applied reverse voltage of 4.0V DC.

2. Device mounted on 75mm\*75mm\*1.6mm cu plate heatsink.

3.The typical data above is for reference only.



# GBU15005 THRU GBU1510

Reverse Voltage - 50 to 1000 Volts Forward Current - 15.0 Amperes

## Ratings And Characteristic Curves

FIG.1-MAXIMUM FORWARD SURGE CURRENT

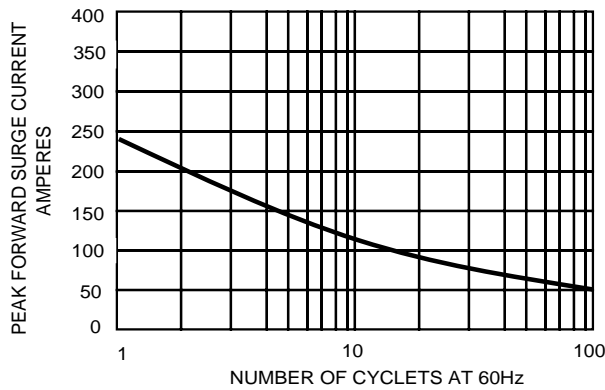


FIG.2- DERATING CURVE  
OUTPUT RECTIFIED CURRENT

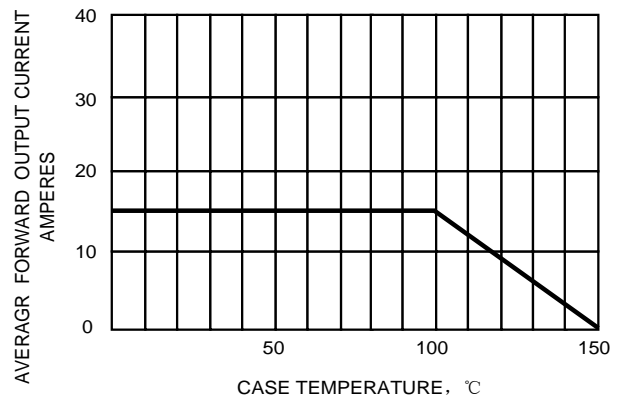


FIG.3-TYPICAL FORWARD CHARACTERISTICS

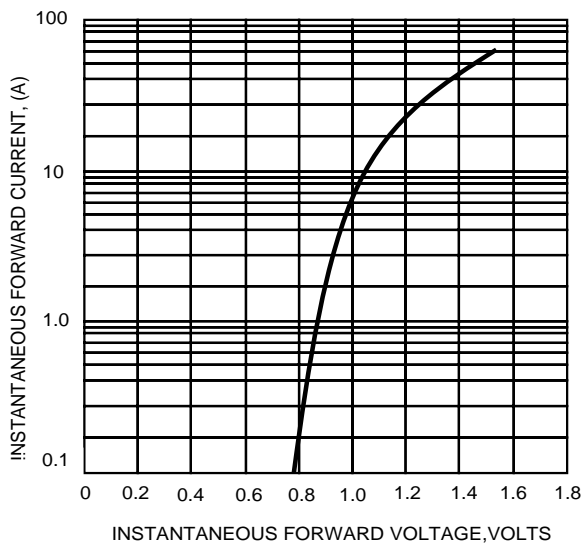
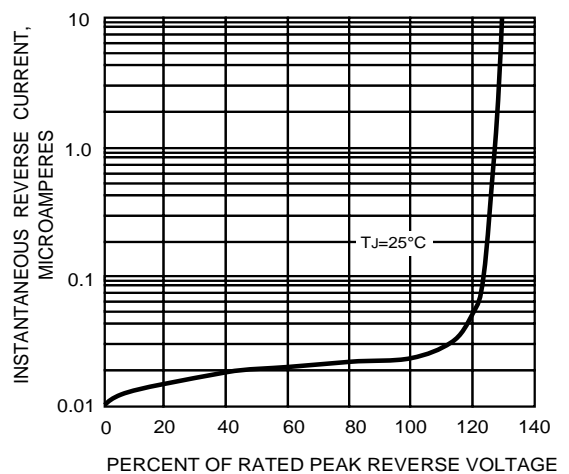


FIG.4-TYPICAL REVERSE CHARACTERISTICS



The curve graph is for reference only