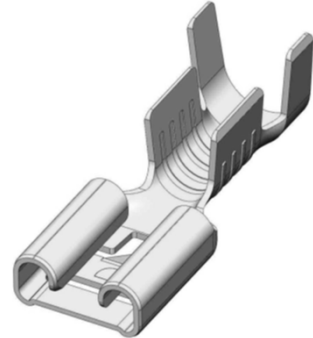


TAB SIZE	6,3 x 0,80
WIRE SIZE	2,50 - 4,00 mm <sup>2</sup>
MATERIAL	CuZn
PLATING	Sn
MAXIMAL TEMPERATURE	120 °C



## TEST RESULTS

### INSERTION / WITHDRAWAL FORCE

	1. INSERTION	1. WITHDRAWAL	6. WITHDRAWAL
TS EN 61210	80 N max.	-	18 N min.
HATKO	80 N max.	-	18 N min.
Typical Values	29	-	26

### CRIMP DATAS

	1. PULL OUT FORCE	
	2,50 mm <sup>2</sup>	4,00 mm <sup>2</sup>
TS EN 61210	230 N min.	310 N min.
HATKO	230 N min.	310 N min.
Typical Values	375 N	418 N

### CRIMP MEASUREMENTS

	HEIGHT		WIDTH	
	WIRE	INSULATOR	WIRE	INSULATOR
2,50 mm <sup>2</sup>	2,15 ±0,05	4,05 ±0,05	3,60 ±0,05	4,65 ±0,05
4,00 mm <sup>2</sup>	2,30 ±0,05	4,20 ±0,05	3,60 ±0,05	4,70 ±0,05

	CURRENT CARRYING CAPACITY Max. A	AMBIENT TEMPERATURE °C
2,50 mm <sup>2</sup>	26	45
4,00 mm <sup>2</sup>	29	50

PREP.: TURAN KELEŞ

CON.: HUSEYIN DOĞAN