



S.T K 7 3 5 8

Thick Film Hybrid IC

TENTATIVE

Case Outline : 15 pins (See attached drawing.)

Function : Offline Switching Regulator

Use : Color TV power supply

Features : Self oscillation type

Absolute Maximum Ratings at $T_a=25^{\circ}\text{C}$

			unit
AC Input Voltage	V_{AC}	0 to 280	V_{rms}
Maximum Output Power	W_{omax}	80	W
		(V_{AC} 150 to 280V) 100	W
Operating Temperature	T_{opg}	-10 to +65	$^{\circ}\text{C}$
Storage Temperature	T_{stg}	-30 to +105	$^{\circ}\text{C}$
Operating Case Temperature	T_{cmax}	105	$^{\circ}\text{C}$
Thermal Resistance	θ_{j-c}	1.6	$^{\circ}\text{C/W}$
Junction Temperature	T_{jmax}	150	$^{\circ}\text{C}$

Electrical Characteristics at $T_a=25^{\circ}\text{C}$, See specified test circuit.

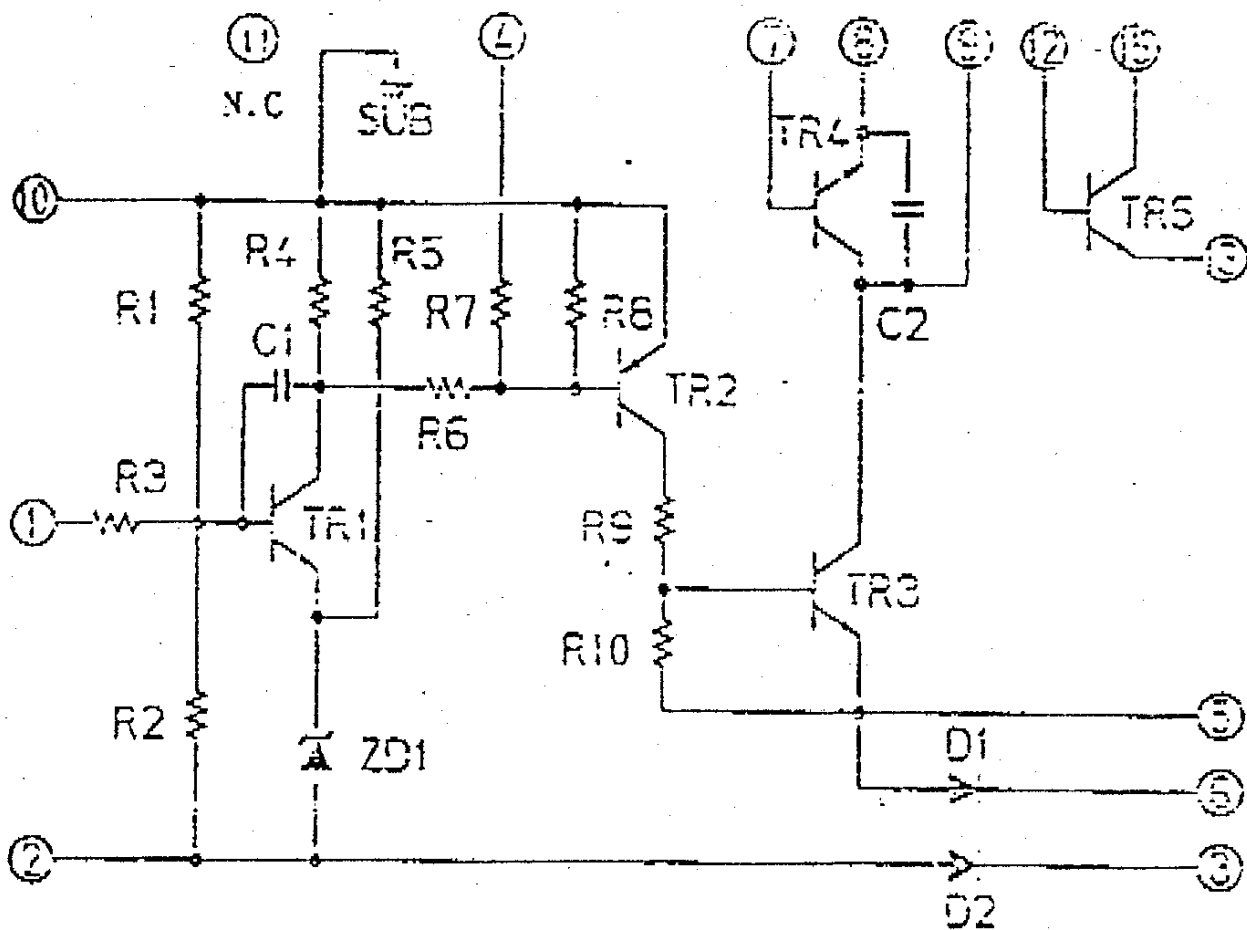
		min	typ	max	unit
Output Voltage Setting	$V_{AC}=200V, I_o=0.3A$	114	115	116	V
Line Regulation	$V_{AC}=85$ to 280V, $I_o=0.5A$		0.4	1.0	V
Load Regulation	$V_{AC}=200V, I_o=0.3$ to 0.7A		1.0	1.5	V
Input Voltage	$V_{AC}=200V, I_o=0.7A$		103	106	W
Output Ripple Voltage	$V_{AC}=200V, I_o=0.7A$		0.4	0.6	V_{pp}
Temperature Coefficient	$V_{AC}=200V, I_o=0.7A$		7		$mV/^{\circ}\text{C}$
Light Load Characteristic	$V_{AC}=200V, R_L=4.7k\Omega$	125	135		V

These specifications are subject to change without notice.

TOKYO SANYO ELECTRIC CO., LTD. SEMICONDUCTOR DIVISION
15-13, 6-CHOME, SOTOKANDA, CHIYODA-KU, TOKYO 101 JAPAN

6026KI.TS STK7358-1/4

Internal Equivalent Circuit (STK7358)



Case Outline

unit:mm

