

## ■Error Amplifier ICs (SE series)

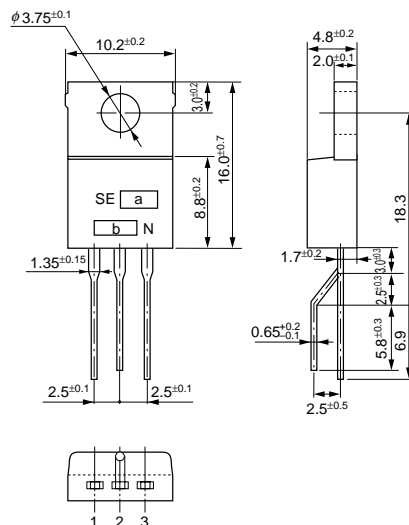
Part No.	Absolute Maximum Ratings (T <sub>a</sub> =25°C)			Electrical Characteristics (T <sub>a</sub> =25°C)	Remarks
	Collector-Ground Voltage	Collector Current	Operating Temperature	Output Detection Voltage	
	V <sub>CGO</sub> (V)	I <sub>c</sub> (mA)	T <sub>OP</sub> (°C)	V <sub>S</sub> (V)	
SE005N	12	20	−20 to +125 (T <sub>C</sub> )	5.0±0.1	Low V <sub>S</sub>
012N	50			12.0±0.2	
015N				15.0±0.2	
024N				24.0±0.2	
034N				34.0±0.3	
040N				40.0±0.4	
070N	150			70.2±0.8	High V <sub>S</sub>
080N				80.2±0.8	
090N				90.0±0.8	
105N				105.2±0.8	
110N				110.2±0.8	
115N				115.2±0.8	
120N				120.2±0.8	
125N				125.2±0.8	
130N				130.2±0.8	
135N				135.2±0.8	
140N				141.2±0.8	

## ■Variable Voltage Detection Type Error Amplifier ICs

Part No.	Absolute Maximum Ratings (T <sub>a</sub> =25°C)			Electrical Characteristics (T <sub>a</sub> =25°C)	Remarks
	Collector-Ground Voltage V <sub>CGO</sub> (V)	Collector Current I <sub>c</sub> (mA)	Operating Temperature T <sub>OP</sub> (°C)	Output Detection Voltage V <sub>s</sub> (V)	
SE-B3	150	20	-20 to +125 (T <sub>c</sub> )	141.2±0.6 Condition I <sub>IN</sub> =4mA, R <sub>C</sub> =9.1kΩ R <sub>S</sub> =88.7kΩ	Variable voltage detection Gain adjustment possible

## ■External Dimensions

(unit: mm)



a. Part Number  
b. Lot Number

Forming No.12